

CITY OF KUNA
PO Box 13 - Kuna, ID 83634
Phone: 208.922.5274 - Fax: 208.922.5989

**Case No. 22-02-AN (Annexation), 22-01-ZC (Rezone)
for The Lamp District**

NOTICE IS HEREBY GIVEN the Planning & Zoning Commission will hold a public hearing **Tuesday, August 23, 2022, at 6:00 PM**, or as soon as can be heard; in connection with an **Annexation (AN)** request to annex four (4) parcels (APNs: R8528532000, R8528531500, R8528531000, R8528530500) totaling approx. 24.65 acres into Kuna City Limits with a C-2 (Area Commercial) zoning district; and to **Rezone (ZC)** approx. 10.18 acres (APNs: S1418336401, S1418336332), already annexed into Kuna City Limits, to a C-2 (Area Commercial) zone. The subject sites are located on the northeast corner of the N Meridian and E Deer Flat intersection; Section 18, Township 2 North, Range 1 East.

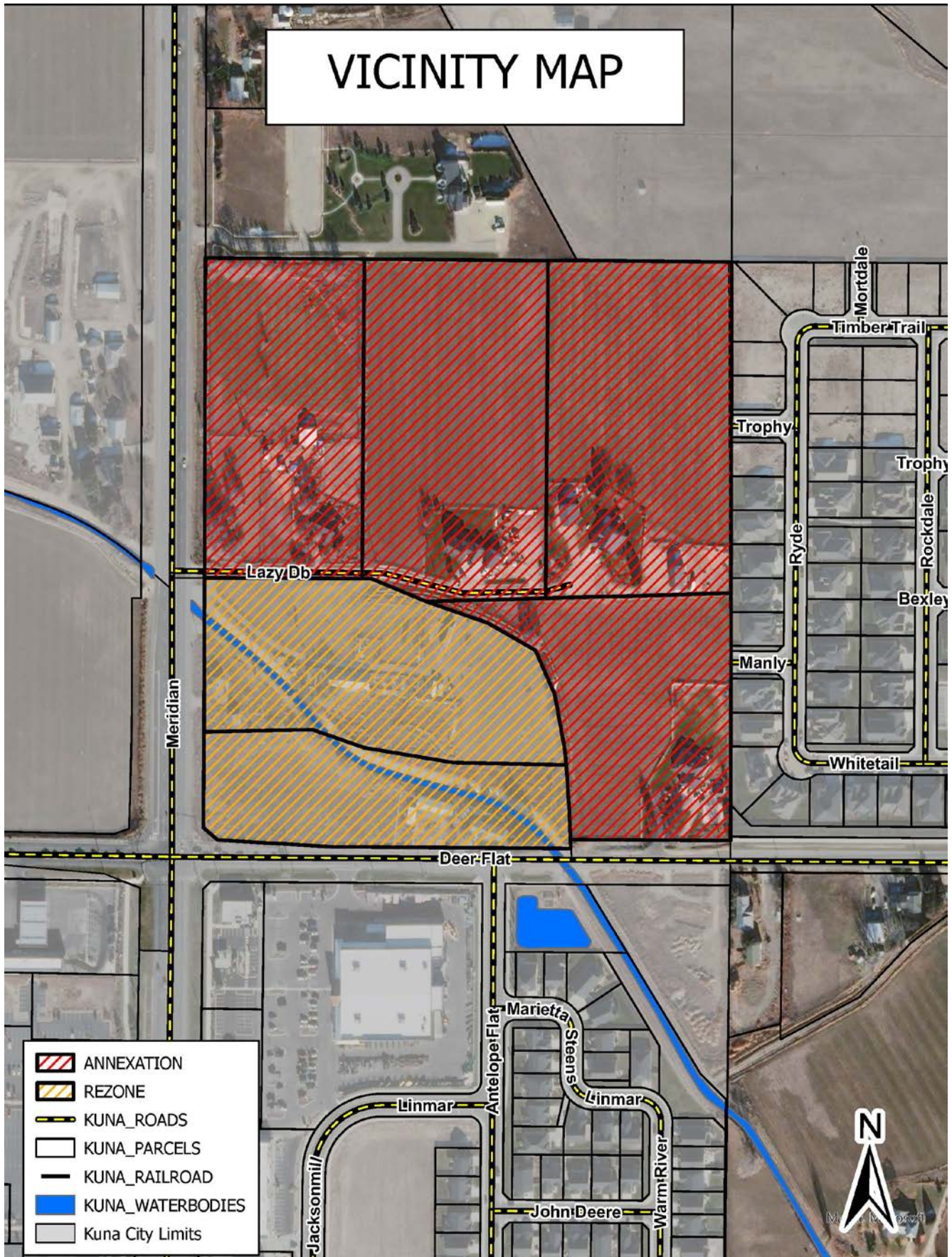
Please do not contact the Commission or Council including the Mayor as this may jeopardize the public hearing process as it is considered ex parte. If you require special accommodations, please contact Kuna Planning & Zoning Department prior to the meeting at (208) 922-5274.

The public is invited to provide written or oral testimony; the City of Kuna is providing alternative ways for the community to submit comments at Public Hearings if they do not wish to testify in person at the hearing, please contact the Kuna Planning & Zoning Department at (208) 922-5274 for more information.

Kuna Planning & Zoning Department

Vicinity Map Provided on Page 2

VICINITY MAP



- ANNEXATION
- REZONE
- KUNA_ROADS
- KUNA_PARCELS
- KUNA_RAILROAD
- KUNA_WATERBODIES
- Kuna City Limits